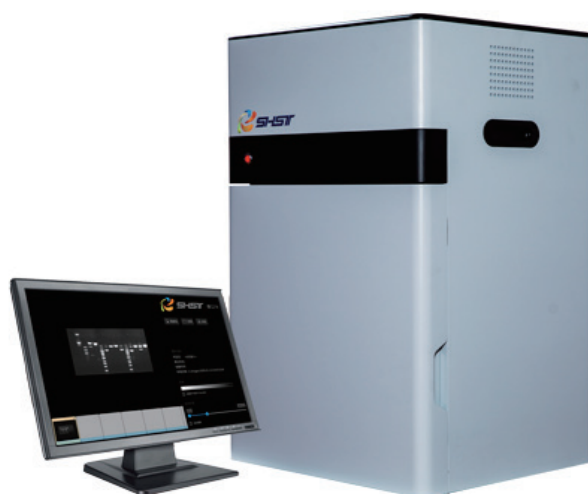


2023

Shenhua Science Technology Co., Ltd.

Gel Documentation System (Classical)



///Features

- UP to 20 Megapixels
- Auto Focus
- Real White LED transmission
- Numeric Focus and Aperture

///Specification

Model		SH-510	SH-520
Digital Camera	Resolution	5Megapixels, 2592*1944	20Megapixels, 4800*4440
	Dynamic Range	4.8OD	
	Pixel density	16bit (65536 Grey Scales)	
Lens	Motorized Lens	F1.2 Motorized Lens	
	Resolution	20 Megapixels	
	Control	Numeric Focus controlled via Software	
Light Source	UV transmission	302nm as standard, Image Area: 21x26cm (Optional 254nm、365nm)	
	White LED transmission	Real white LED transmission, Image Area:19x26cm	
	Optional Blue LED transmission	Optional Blue LED transmission, Image Area:19x26cm	
Filter system	Filter	Standard filter for gel doc application	
Software	Capture	SHSTCapture software	
	Analysis	SHSTAnalysis software	

SHST Capture/Analysis Software

SHST Capture

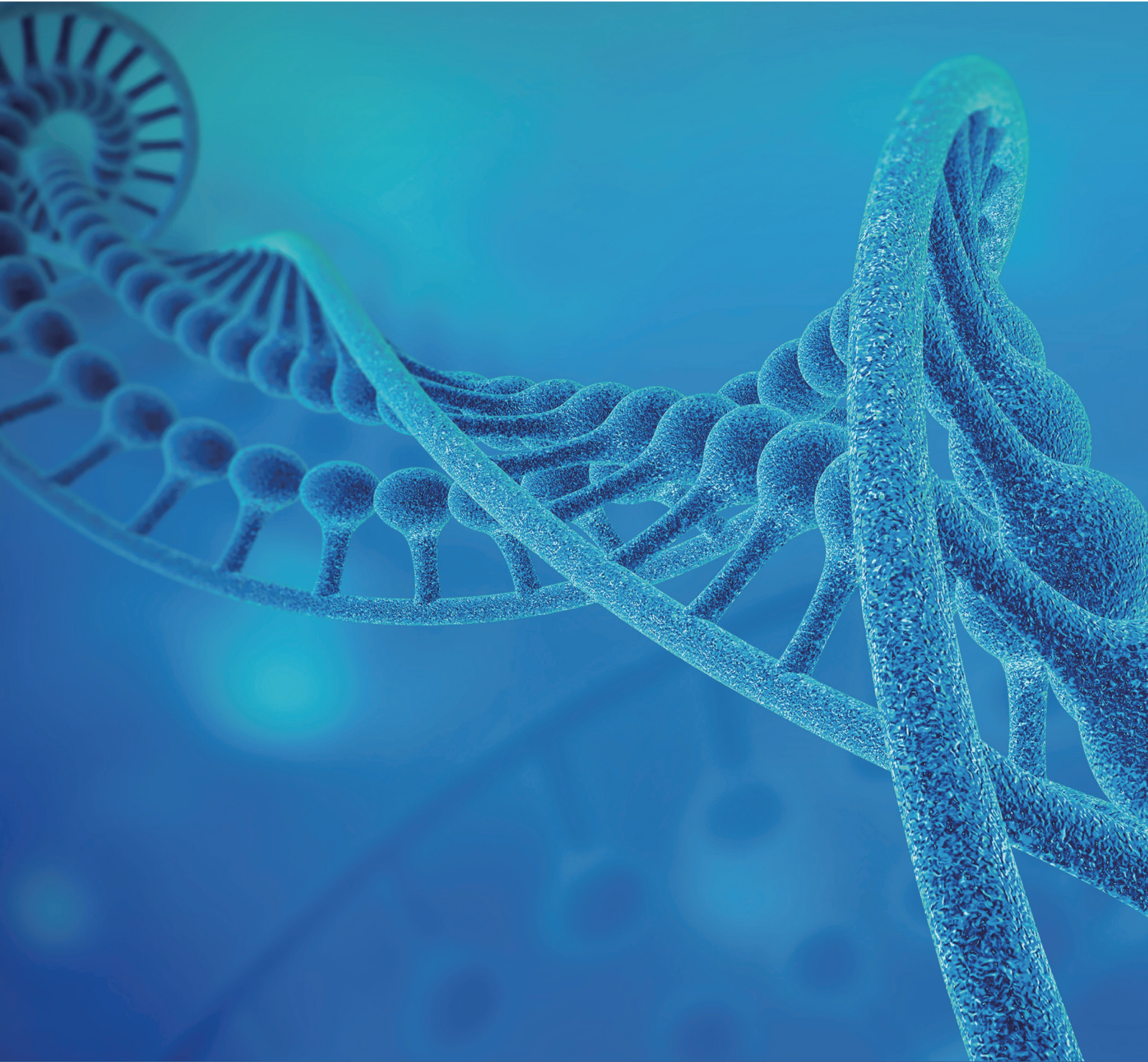


- Runs without the software encryption devices, so as to avoid the inability of experiments due to the loss or damage of encryption devices.
- Automatic exposure: The system automatically recognizes the sample intensity, automatically sets the optimal single exposure time, and obtains a single image without the need for manual settings.
- Multilingual interface, real-time image acquisition function, used for acquisition of nucleic acid, protein electrophoresis gel images and chemiluminescence images, GLP function, recording image generation time, shooting parameters and other information.
- Binning modes such as 1X1, 2X2, 3X3, 4X4 increase sensitivity of the system, so as to capture the weak bands.
- Automatic adjustment of grayscale, without manual adjustment of display parameters, can automatically present effective signals in the image perfectly
- Real time temperature display of the cooled CCD camera, so as to ensure the sample image acquisition under optimal condition of the camera.
- Multi frame function provides four accumulation modes (time accumulation, grayscale accumulation, grayscales series and time series) .
- Overlay the Marker and Sample after acquisition, avoid manual stacking.
- Multiple pseudo colors display bright bands in different colors, and make it easy to view the strength and weakness of the sample.
- Database management of sample images allows to view information on sample images captured at any time in the past.

SHST Analysis



- Runs without the software encryption devices, unlimited software users.
- Automatic molecular weight calculation, band concentration calculation, relative content percentage calculation and density calculation
- Support various image processing functions such as rotation, cropping, and so on.
- Convenient image navigation and browse, adjust the window width and level, and achieve the best image display effect.
- Optical density calculations on designated areas, suitable for protein quantitative analysis.
- Remove background mode to obtain optimized accurate results of analysis.
- The analysis results can be output to an Excel file based on the selection range



Address : Vidmahe Enclave, No 135, Ground floor,
Kodigehalli - Thindlu Main Road, opp. BESCO
Office, IEHCS Layout, Post, Vidyaranyapura,
Bengaluru, Karnataka 560097

Email : info@labgig.in

