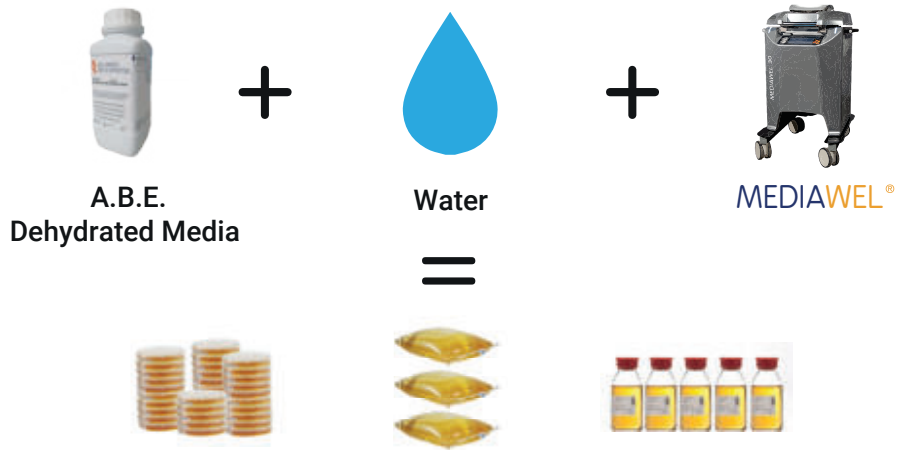


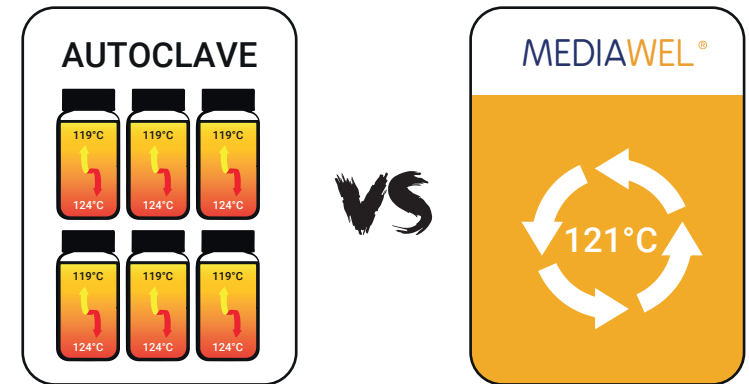
# ALL IN ONE MEDIA PREPARATION



## SIMPLIFY

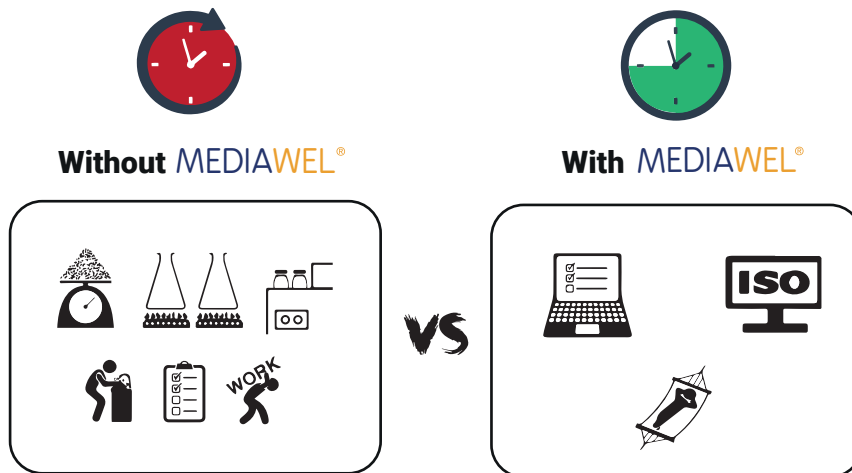


## HOMOGENEITY

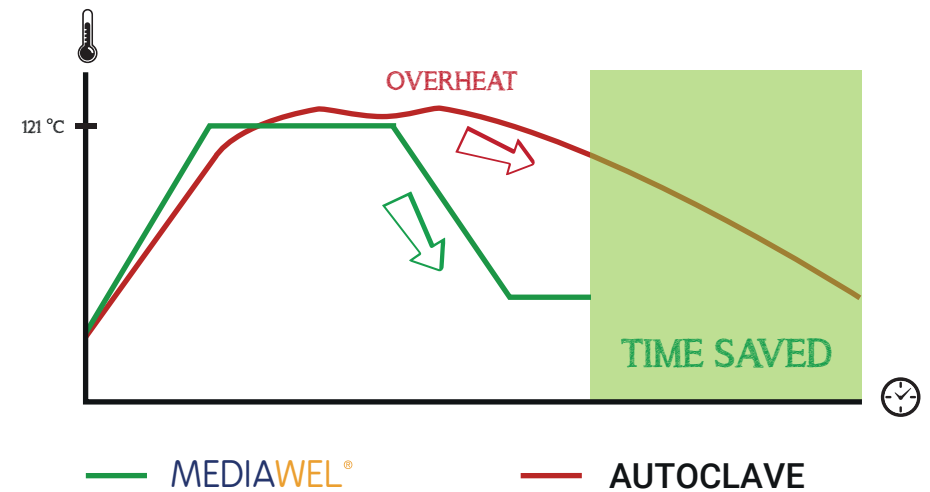


## ALL IN ONE MEDIA PREPARATION

## TIME SAVING



## FAST COOLING SYSTEM



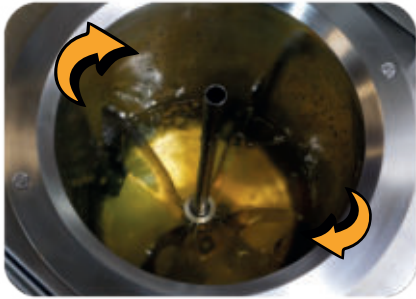
# MEDIA PREPARATOR

Prepare up to 30L of media

# MEDIAWEL 30<sup>®</sup>



**Safety lid**  
Locked above 80°C



**Large stirrer**  
From liquid to viscous media



**e-TRACE<sup>®</sup> technology**



**Easy to move**  
Large medical wheels



**Multicolored visual alarm**

**7" LCD touchscreen**  
Gloves friendly

**Antishock body**  
ABS PC PLASTIC



**Easy cleaning**  
Trapdoor to access the vessel

## PERFORMANCES



From 2.5 to 30 liters



60 - 90 min



25-125 °C / ± 0.5 °C

**Delivered with the MEDIAWEL 30 :** User Manual, Control certificate, Large magnetic stirrer (MEDW2008), Sampling tube (MEDW2009), Draining plug (MEDW2010), Sampling nozzle seals x2 (MEDW4011), Sampling nozzles x2 (MEDW2003 : Ø 12mm + MEDW2004: Ø 6.4mm), Inlet and outlet water tubing (4 m) + 4 tubing clamps (MEDW4012), Decompression filters x2 (MEDW3001), Bactystopper - Calibrated sterile carded cotton x50 (MEDW3003), Sliding washer stirrer axis x2 (MEDW4003), Sampling nozzle seals x2 (MEDW4011), USB key, 3 Months free access to the Labpage "Real time data monitoring LICENCE"

## TECHNICAL DATA SHEET

Capacity	From 2.5 to 30 liters
Sterilization temperature	From 25 to 125°C
Sterilization time	From 1 to 99 min
Distribution temperature	From 25 to 80°C
Temperature accuracy	+/- 0.5°C after stabilization
Remaining volume	<130ml
Addition cap	✓
Traceability	eTRACE® Module integrated, USB data export (PDF/CSV)
Traceability WIFI/Ethernet (optional)	Labpage® dashboard. Real time data monitoring, data storage on SD card (up to 10 000 cycles)
Temperature probe	Media : 3 probes (1 standard, 1 in option and 1 for calibration)
Safety pressure release	Safety valve
Dispensing port	Adapters for tubes of 6.4 mm / 12 mm
Continuous homogenization	✓
Touchscreen	Tactile, LCD 7"
Alarm	Multicolored visual alarm
Cleaning	Trapdoor, easy access to the vessel
High mobility	Stable and easy to move : 4 large medical wheels
Robustness	Antishock body (ABS PC PLASTIC)
Vessel	Stainless steel AISI 316L
Programs	50
Weight	154kg
Dimensions (L x l x H)	735 x 585 x 1053 mm
Warranty	1 year
Power supply	400V +/- 10% - 50/60 Hz - 17A (by phase) - 9000 W or 208V +/- 10% - 50/60 Hz - 9A (by phase) - 2070 W
Country of origin	France - European Union

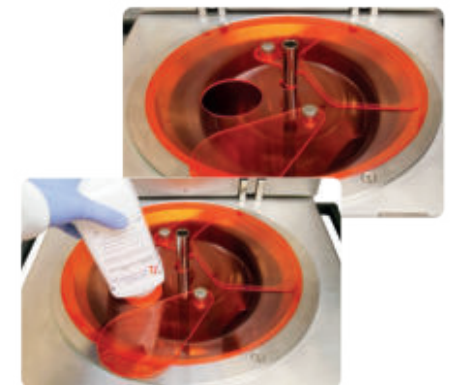
## MEDIAWEL 30®

### Quick water connection kit (MEDW2002) :



Quick and easy water connection from one room to another !

### MEDIAWEL Dust cover (MEDW2021) :

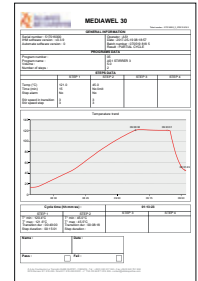


Avoid volatile powder !



# TRACEABILITY WITH YOUR MEDIAWEL®

Each cycle is exported (PDF/CSV) to your USB key :



**REAL TIME DATA MONITORING** Labpage® Real time data monitoring through WIFI/Ethernet, connected to your PC / Smartphone / Tablet :

**Dashboard for the live monitoring :** program settings, temperature settings and current temperature, alarms and notifications ...



Cycles are automatically recorded and stored. Recall them one by one or sort them out by batch number, date, user ...



\*SD card included - up to 10 000 cycles data storage