

2023

Shenhua Science Technology Co., Ltd.

2023 **NEW** Magic Series



「Magic」 Mini Chemi Imager



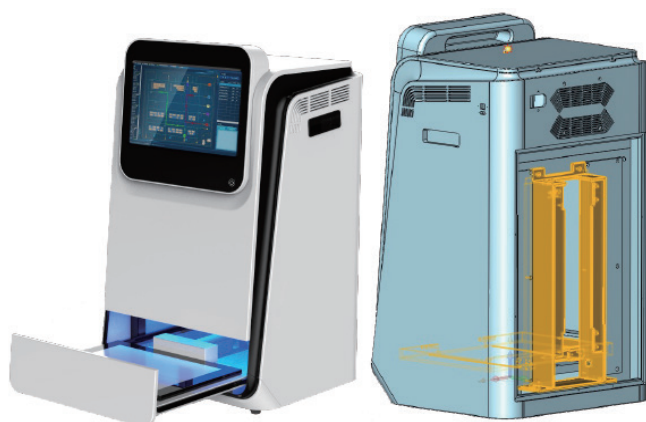
「Magic」 Multi functional Imager



「Magic」 Gel Doc System

Features

- Sensitive Cooled Digital Camera
- Electronic lifting platform and accurate auto focus function provide the available view area for diverse sizes of the sample
- 「Magic」 series adopt (optional) removable industrial computers, which provide high feasibility, running speed and avoid the after sales possibilities of the embedded PADS.



Electronic lifting platform and accurate auto focus



Removable industrial computer

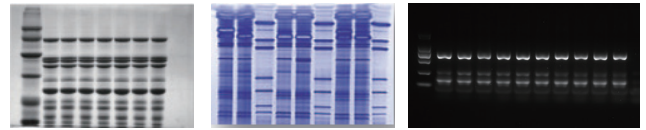
Magic **NEW** Gel doc system

///Introduction

Smart, Compact and saving the space. Optional removable industrial compute provides high feasibility, running speed and avoids the after sales possibilities of the embedded PADs.

///Features

- Smart and compact
- User friendly Interface
- Focus on DNA/RNA and protein gels
- Optional Fluorescent application
- Unlimited software users



///Standard parameters

Model		SH-Magic 630
Camera	Resolution	6.3 Megapixels, 3072x2048
	Pixel density	16bit (65536 grey scales)
	Quantum efficiency	97%
	Sensitivity	Lower than 5pg EB stained DNA
Lens	Motorized	F1.2 motorized lens
Sample tray	Gel documentation	DNA//RNA sample tray: 17x13cm , Blue LED Transmission
	Protein Gels	White LED transmission: 17x13cm
Software	SHST	SHSTCapture and Analysis Software

///Optional accessories

Fluorescent Module	Light source	365nm、470nm、530nm、630nm etc.
	Filters	460nm、525nm、690nm etc.
	Filter wheel	Optional eight position filter wheel
Industrial computer	Removable	10.1 Inch Touch Screen, Intel processor

SHST Capture/Analysis Software

SHST Capture

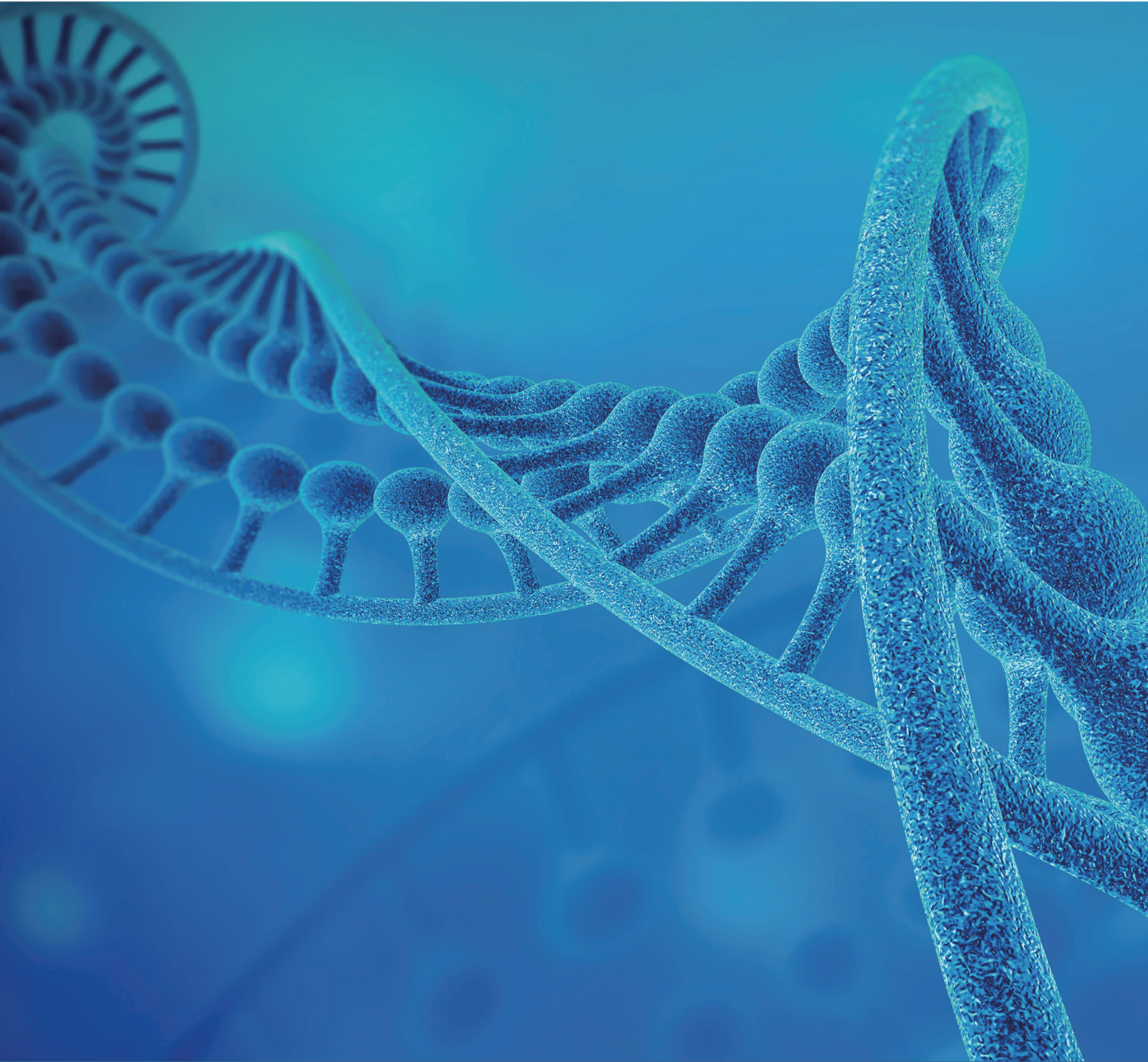


- Runs without the software encryption devices, so as to avoid the inability of experiments due to the loss or damage of encryption devices.
- Automatic exposure: The system automatically recognizes the sample intensity, automatically sets the optimal single exposure time, and obtains a single image without the need for manual settings.
- Multilingual interface, real-time image acquisition function, used for acquisition of nucleic acid, protein electrophoresis gel images and chemiluminescence images, GLP function, recording image generation time, shooting parameters and other information.
- Binning modes such as 1X1, 2X2, 3X3, 4X4 increase sensitivity of the system, so as to capture the weak bands.
- Automatic adjustment of grayscale, without manual adjustment of display parameters, can automatically present effective signals in the image perfectly
- Real time temperature display of the cooled CCD camera, so as to ensure the sample image acquisition under optimal condition of the camera.
- Multi frame function provides four accumulation modes (time accumulation, grayscale accumulation, grayscales series and time series) .
- Overlay the Marker and Sample after acquisition, avoid manual stacking.
- Multiple pseudo colors display bright bands in different colors, and make it easy to view the strength and weakness of the sample.
- Database management of sample images allows to view information on sample images captured at any time in the past.

SHST Analysis



- Runs without the software encryption devices, unlimited software users.
- Automatic molecular weight calculation, band concentration calculation, relative content percentage calculation and density calculation
- Support various image processing functions such as rotation, cropping, and so on.
- Convenient image navigation and browse, adjust the window width and level, and achieve the best image display effect.
- Optical density calculations on designated areas, suitable for protein quantitative analysis.
- Remove background mode to obtain optimized accurate results of analysis.
- The analysis results can be output to an Excel file based on the selection range



Address : Vidmahe Enclave, No 135, Ground floor,
Kodigehalli - Thindlu Main Road, opp. BESCO
Office, IEHCS Layout, Post, Vidyaranyapura,
Bengaluru, Karnataka 560097

Email : info@labgig.in

