

2023

Shenhua Science Technology Co., Ltd.

# 2023 **NEW** Magic Series



「Magic」 Mini Chemi Imager



「Magic」 Multi functional Imager



「Magic」 Gel Doc System

## Features

- Sensitive Cooled Digital Camera
- Electronic lifting platform and accurate auto focus function provide the available view area for diverse sizes of the sample
- 「Magic」 series adopt (optional) removable industrial computers, which provide high feasibility, running speed and avoid the after sales possibilities of the embedded PADs.



Electronic lifting platform and accurate auto focus



Removable industrial computer

# Magic **NEW** Multifunctional Imager

## ///Introduction

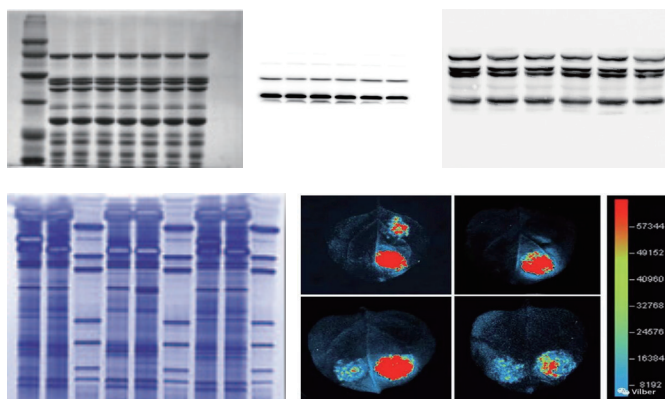
Sensitive camera helps to get the accurate results quickly. High integration of the system provides multiple modes for different applications. Electronic lifting platform and accurate auto focus function provide the available view area for diverse sizes of the samples.

Applications: Chemi imaging, Gel doc, Protein gels, Fluorescence applications.



## ///Features

- High sensitive cooled digital camera
- Removable industrial computer is optional
- Electronic lifting platform and accurate auto focus function
- Multiple modes for diverse applications
- Unlimited software users



### Standard parameters

Model		SH-Magic 100	SH-Magic 523
Cooled digital Camera	Type	Cooled Back-illuminated CMOS	Cooled CCD
	Resolution	9.1 Megapixels	6 Megapixels
	Pixel Size	3.76 × 3.76 μm	4.54 x 4.54 μm
	Temperature	-30 degree regulated	
	Dynamic Range	4.8OD	
	Pixel density	16bit (65536 Grey scales)	
Lens	Electronic Lens	F0.95 as standard, (F0.8 is optional), Accurate auto focus	
Electronic sample drawer	Chemi Imaging	Electronic lifting platform and sample drawer	
	Gel Documentation	Electronic lifting platform and sample drawer, Blue LED transmission	
	Protein Gels	Electronic lifting platform and sample drawer, White LED transmission	
Filter wheel	5 position	Standard 5 position filter wheel	
Software	Capture	SHSTCapture Software	
	Analysis	SHSTAnalysis Analysis Software	

### Optional accessories

Fluorescent Module	Light source	365nm、470nm、530nm、630nm、660nm、770nm etc.	
	Filters	460nm、525nm、690nm、715nm、810nm etc.	
	Filter wheel	Optional eight position filter wheel	
Industrial computer	Removable	13.1 Inch Touch Screen, Intel processor	

# SHST Capture/Analysis Software

## SHST Capture

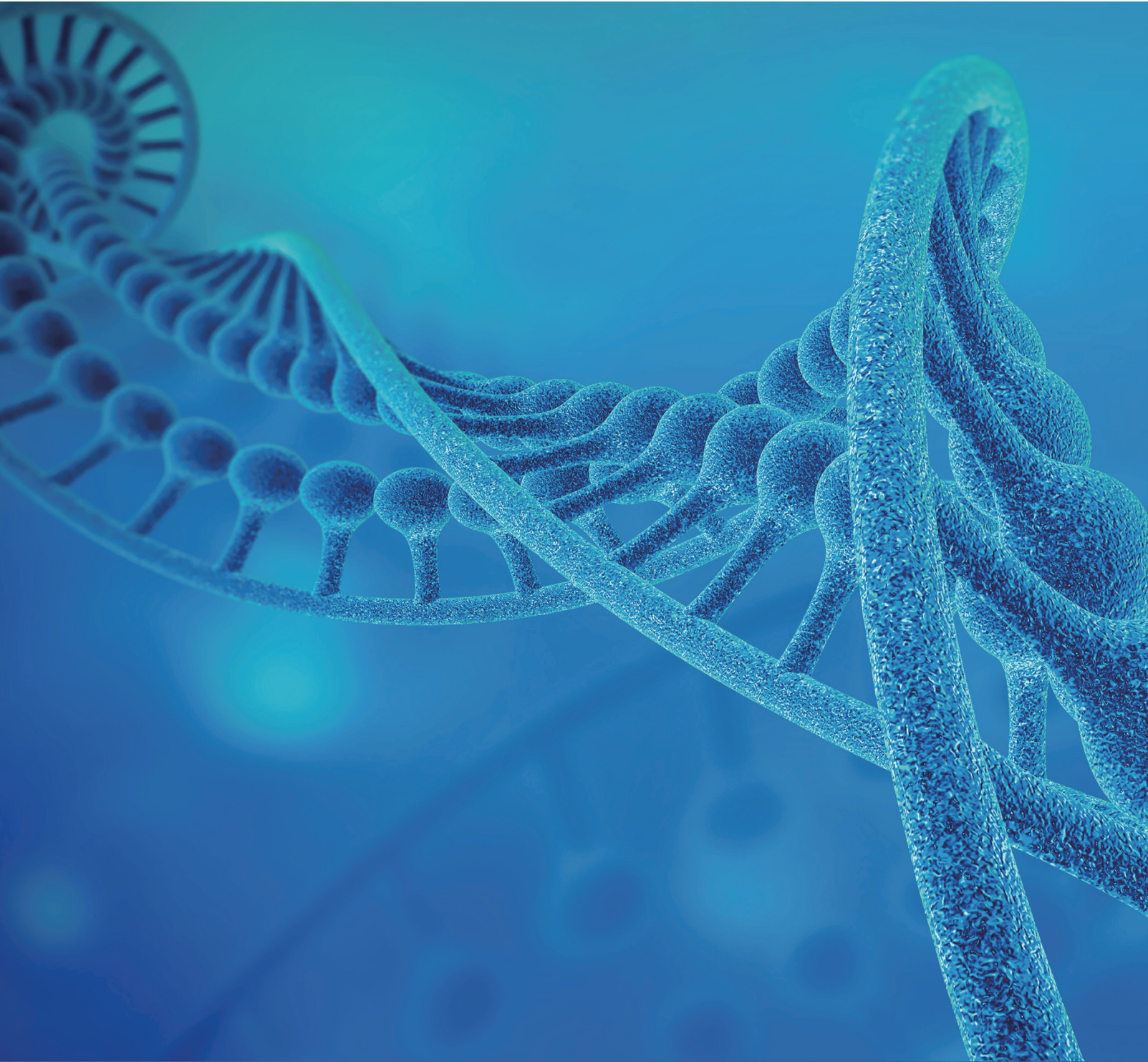


- Runs without the software encryption devices, so as to avoid the inability of experiments due to the loss or damage of encryption devices.
- Automatic exposure: The system automatically recognizes the sample intensity, automatically sets the optimal single exposure time, and obtains a single image without the need for manual settings.
- Multilingual interface, real-time image acquisition function, used for acquisition of nucleic acid, protein electrophoresis gel images and chemiluminescence images, GLP function, recording image generation time, shooting parameters and other information.
- Binning modes such as 1X1, 2X2, 3X3, 4X4 increase sensitivity of the system, so as to capture the weak bands.
- Automatic adjustment of grayscale, without manual adjustment of display parameters, can automatically present effective signals in the image perfectly
- Real time temperature display of the cooled CCD camera, so as to ensure the sample image acquisition under optimal condition of the camera.
- Multi frame function provides four accumulation modes (time accumulation, grayscale accumulation, grayscales series and time series) .
- Overlay the Marker and Sample after acquisition, avoid manual stacking.
- Multiple pseudo colors display bright bands in different colors, and make it easy to view the strength and weakness of the sample.
- Database management of sample images allows to view information on sample images captured at any time in the past.

## SHST Analysis



- Runs without the software encryption devices, unlimited software users.
- Automatic molecular weight calculation, band concentration calculation, relative content percentage calculation and density calculation
- Support various image processing functions such as rotation, cropping, and so on.
- Convenient image navigation and browse, adjust the window width and level, and achieve the best image display effect.
- Optical density calculations on designated areas, suitable for protein quantitative analysis.
- Remove background mode to obtain optimized accurate results of analysis.
- The analysis results can be output to an Excel file based on the selection range



Address : Vidmahe Enclave, No 135, Ground floor,  
Kodigehalli - Thindlu Main Road, opp. BESCO  
Office, IEHCS Layout, Post, Vidyaranyapura,  
Bengaluru, Karnataka 560097

Email : [info@labgig.in](mailto:info@labgig.in)

