

2023

Shenhua Science Technology Co., Ltd.

Multifunctional Imager (Classical)



///Features

- Standard for Chemiluminescence, Gel doc & Protein Gels
- Cooled sensitive digital camera
- Module design
- Optional Fluorescent Application

///Parameters (Standard and Optional)

Model		SH-100	SH-523
Cooled digital Camera	Type	Cooled Back-illuminated CMOS	Cooled CCD
	Resolution	9.1 Megapixels	6 Megapixels
	Pixel Size	3.76 × 3.76 μm	4.54 x 4.54 μm
	Temperature	-30 degree regulated	
	Dynamic Range	4.8OD	
	Pixel density	16bit (65536 Grey scales)	
Lens	Electronic Lens	F0.95 as standard, (F0.8 is optional), Accurate auto focus	
Sample	Chemi Imaging	4 layers manual sample tray	
	Gel Documentation	UV transilluminator (Area 21x26cm fixed) , Blue transmission as optional	
	Protein Gels	White LED transmission (Area 21x26 fixed)	
	Optional florescent Module	Epi-UV, RGB and NIR florescent module as optional	
Filter wheel	5 position	Standard 5 position filter wheel, (8 position optional)	
Software	Capture	SHSTCapture Software	
	Analysis	SHSTAnalysis Analysis Software	

SHST Capture/Analysis Software

SHST Capture

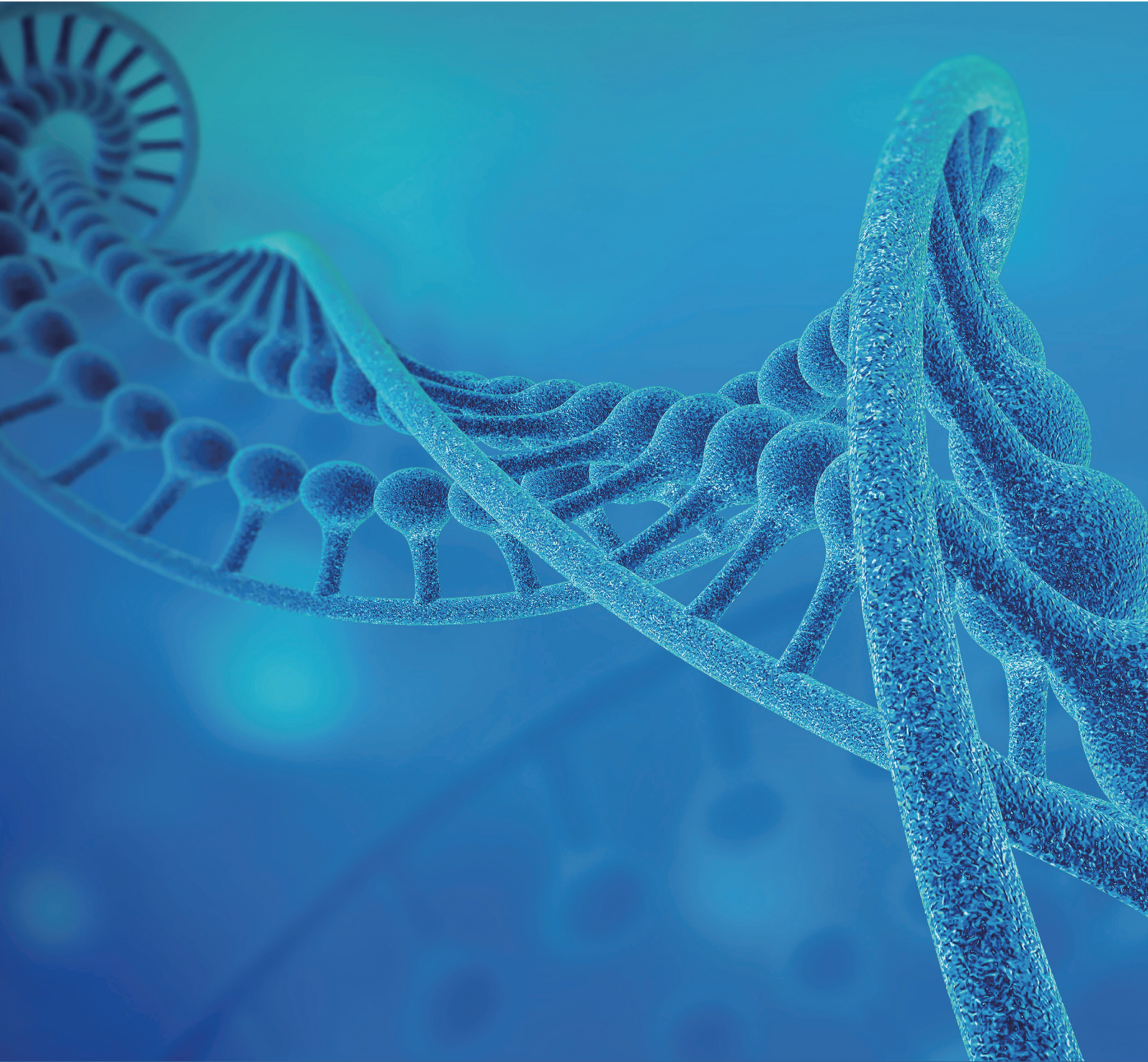


- Runs without the software encryption devices, so as to avoid the inability of experiments due to the loss or damage of encryption devices.
- Automatic exposure: The system automatically recognizes the sample intensity, automatically sets the optimal single exposure time, and obtains a single image without the need for manual settings.
- Multilingual interface, real-time image acquisition function, used for acquisition of nucleic acid, protein electrophoresis gel images and chemiluminescence images, GLP function, recording image generation time, shooting parameters and other information.
- Binning modes such as 1X1, 2X2, 3X3, 4X4 increase sensitivity of the system, so as to capture the weak bands.
- Automatic adjustment of grayscale, without manual adjustment of display parameters, can automatically present effective signals in the image perfectly
- Real time temperature display of the cooled CCD camera, so as to ensure the sample image acquisition under optimal condition of the camera.
- Multi frame function provides four accumulation modes (time accumulation, grayscale accumulation, grayscales series and time series) .
- Overlay the Marker and Sample after acquisition, avoid manual stacking.
- Multiple pseudo colors display bright bands in different colors, and make it easy to view the strength and weakness of the sample.
- Database management of sample images allows to view information on sample images captured at any time in the past.

SHST Analysis



- Runs without the software encryption devices, unlimited software users.
- Automatic molecular weight calculation, band concentration calculation, relative content percentage calculation and density calculation
- Support various image processing functions such as rotation, cropping, and so on.
- Convenient image navigation and browse, adjust the window width and level, and achieve the best image display effect.
- Optical density calculations on designated areas, suitable for protein quantitative analysis.
- Remove background mode to obtain optimized accurate results of analysis.
- The analysis results can be output to an Excel file based on the selection range



Address : Vidmahe Enclave, No 135, Ground floor,
Kodigehalli - Thindlu Main Road, opp. BESCO
Office, IEHCS Layout, Post, Vidyaranyapura,
Bengaluru, Karnataka 560097

Email : info@labgig.in

